



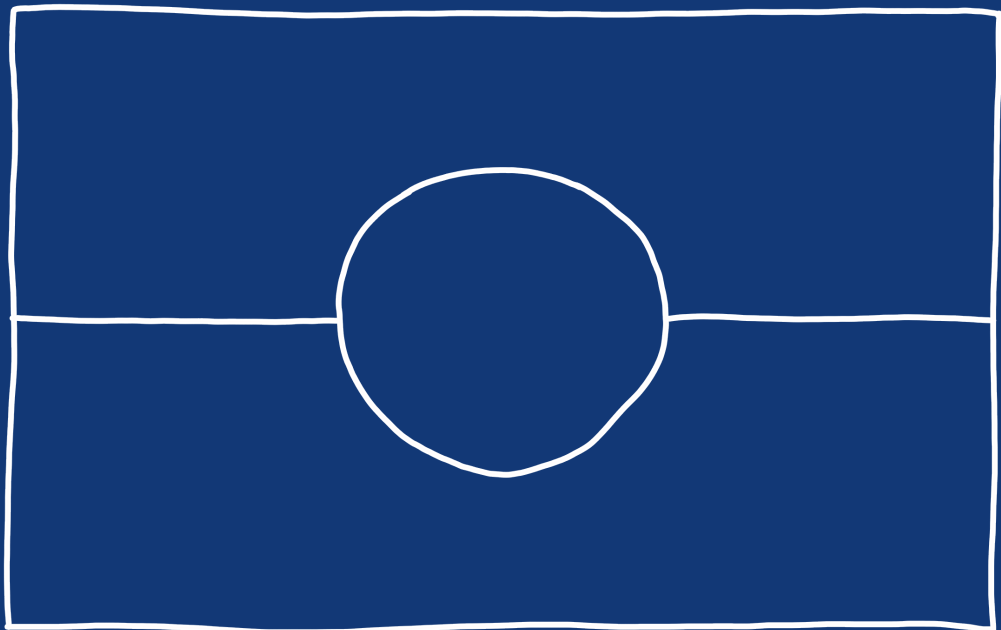
RESPECT, PARTICIPATE, BELONG, ACHIEVE

Acknowledgement of Country

The students and teachers of Five Dock Public School wish to acknowledge the Wangal people of the great Eora nation, who are the traditional owners of the land on which we meet.

We promise to achieve our best when respecting the cultural heritage, beliefs and relationships with the land that the Wangal people began and recognise that these values continue to be important today.

We pay our respects to elders past and present and acknowledge all Aboriginal families, students, teachers and future leaders in our community, remembering that this is, was, and always will be, Aboriginal land.





Our Vision

At Five Dock Public School we believe that through co-operation and collaboration we will continue to foster a culture of high expectations that leads to a high impact learning environment. Our collective purpose is to provide relevant and challenging learning experiences. Through these we will develop the skills, knowledge and understandings that empower our students to actively participate in a complex world, as respectful and tolerant global citizens. Our overall vision is to contribute to every student achieving their potential.

RESPECT, PARTICIPATE, BELONG, ACHIEVE

Contents

| | |
|---|-----------|
| Message from Principal to parents/ | 5 |
| carers School Organisation | 6 |
| Preschool | 7 |
| Early Stage 1 (Kindergarten) | 8 |
| Stage 1 (Year 1) to Stage 3 (Year 6) | 9 |
| Our Support Unit | 10 |
| Curriculum | 11 |
| Useful Things to Know | 14 |
| Our School Uniforms | 15 |
| Crunch and Sip | 16 |
| Communication | 16 |



Message from Principal

Welcome to the Five Dock Public School community. When you enrol your child or children into a preschool or school at any time, you are moving into a new phase of family life and making connections in your community. I am sure you will enjoy your time as a member of a dynamic and inclusive learning community here at Five Dock Public School. I strongly believe that my role as principal is to ensure the very best outcomes for all our children and that a happy and safe school is integral to creating the type of society we want now and in the future. Our school is a place where parents/carers and students have the opportunity to connect with others and in many instances, these connections will last for many years. From preschool to year 6 children develop a sense of belonging to the broader world and here at Five Dock we pride ourselves in ensuring a sense of belonging and connectedness in all our children.

The purpose of this information book is to provide you with the opportunity to become familiar with the procedures and systems that we have to ensure the smooth running of the school. In addition to this I hope you get a feeling for the quality of the school's programs, the strength of the community and the vibrancy of our students, teachers and parent body.

I look forward to working with you and the teachers, learning support officers and administration team to ensure your child/ren have a wonderful primary school experience that prepares them for success throughout their life.

Warm regards

Amanda (Mandy) Dawkins
Dip Tch, B Ed., M. Ed.



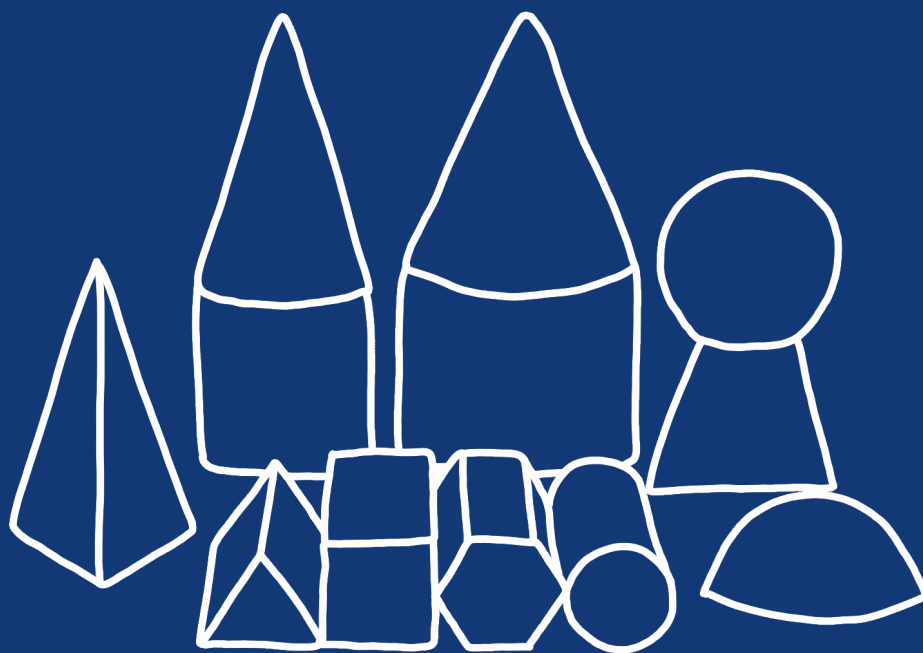
School Organisation

The school is split into five learning areas:

- Preschool (for children in the final year before kindergarten)
- Early Stage 1 (Kindergarten)
- Stage 1 (Years 1 and 2)
- Stage 2 (Years 3 and 4)
- Stage 3 (Years 5 and 6)



RESPECT, PARTICIPATE, BELONG, ACHIEVE



Preschool

Our preschool is run by the NSW Department of Education. We have two preschool groups of up to 20 children who attend for five days per fortnightly rotation. Students attend either Monday and Tuesday or Thursday and Friday every week. Each group attends on alternate Wednesdays.

Hours of the preschool are from 9:00 am to 3:00 pm. Children are able to be collected from 2:30 pm to 3:00 pm. This provides time for the teacher and learning support officer to speak with parents/carers. Details regarding signing in, signing out and the curriculum will be provided at the information meeting and throughout the year for our incoming preschoolers. Transition is held in November.

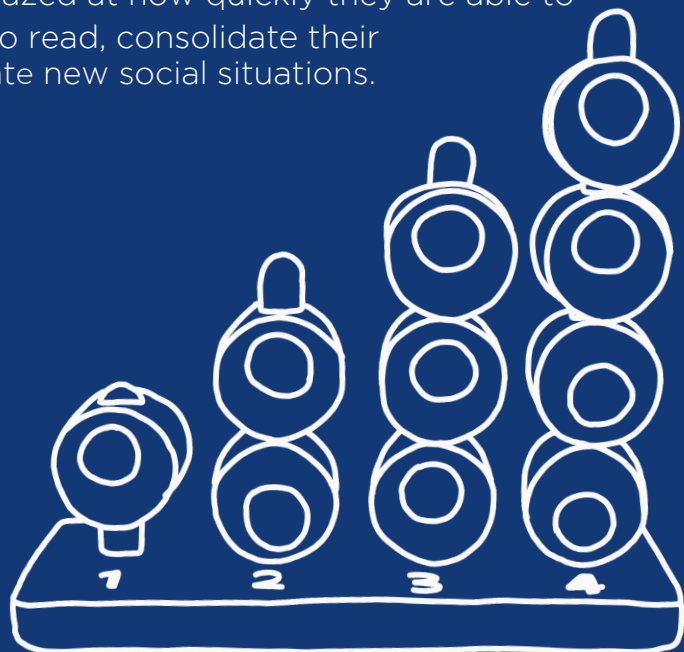
Kindergarten

Starting school is an exciting time for both parents and children. There are excellent resources online to help you prepare for the transition to school. www.schools.nsw.edu.au/gotoschool/primary

To support children in the transition from an early learning environment either in our preschool or another preschool or day care centre, we will invite your child to participate in a transition program. This is common practice in all NSW Department of Education Schools. This involves two or three two hour morning sessions where our new learners spend some time engaging in activities similar to what they will be involved in during the first week of school. It is also a time for them to meet a student from year 5 who will be their nominated buddy in those important first weeks of term 1. Their buddy will be a familiar face as they get used to their new learning environment.

During the first week of school, all our incoming Early Stage 1/ Kindergarten students will participate in the Best Start assessment program. This provides an opportunity for teachers to establish a starting point for individual and whole group learning. This means that our kindergarten children start a few days later than the rest of the school. Best Start is a system wide program. More information will be provided during transition.

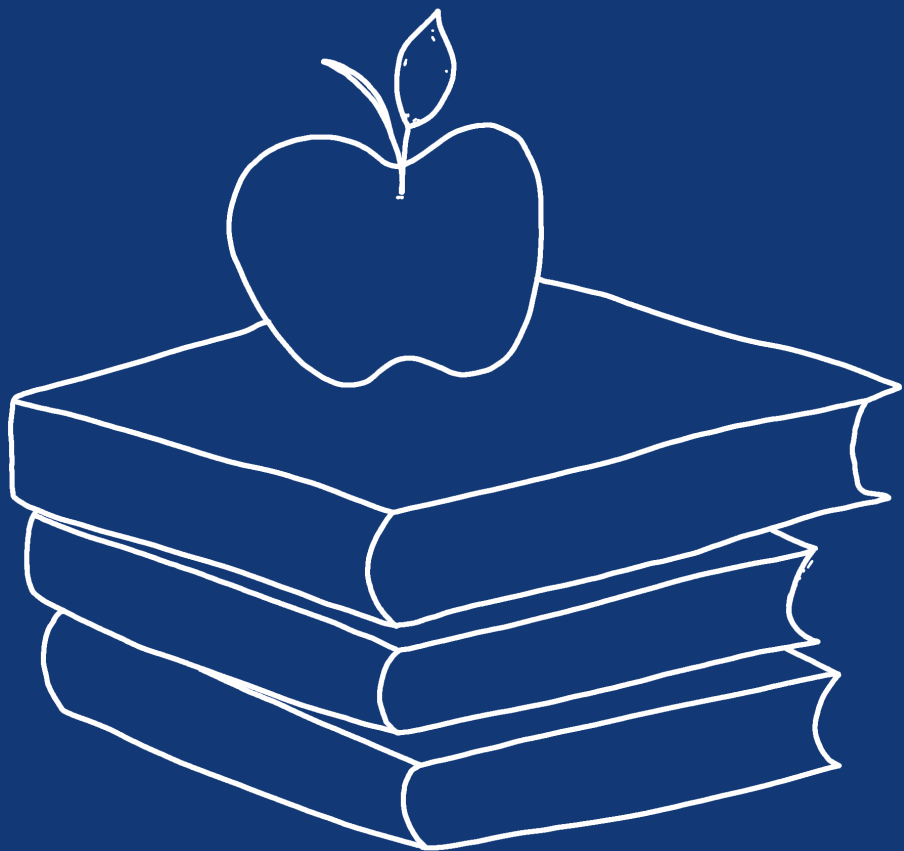
On the first day of school your child will be meeting their classmates, familiarising themselves with their classroom and all of the interesting things inside it, listening to stories, singing and dancing, talking about their likes and interests and making new friends. Your child will soon settle into a weekly routine. You will be amazed at how quickly they are able to begin sounding out letters, learning to read, consolidate their pre-numeracy skills, as well as navigate new social situations.



Year 1 to Year 6

All the children at Five Dock Public School participate in a transition program at the end of the school year. This involves the children being moved into their proposed new class groupings over three sessions. During this time they meet the teacher who they will more than likely be working with in the following year and get to know the other children in their class. We find that this makes for a smooth start to the new year.

It is important for parents/carers to understand that circumstances do change. Sometimes children or teachers change the initial class grouping for a range of reasons which are linked to operational management systems.

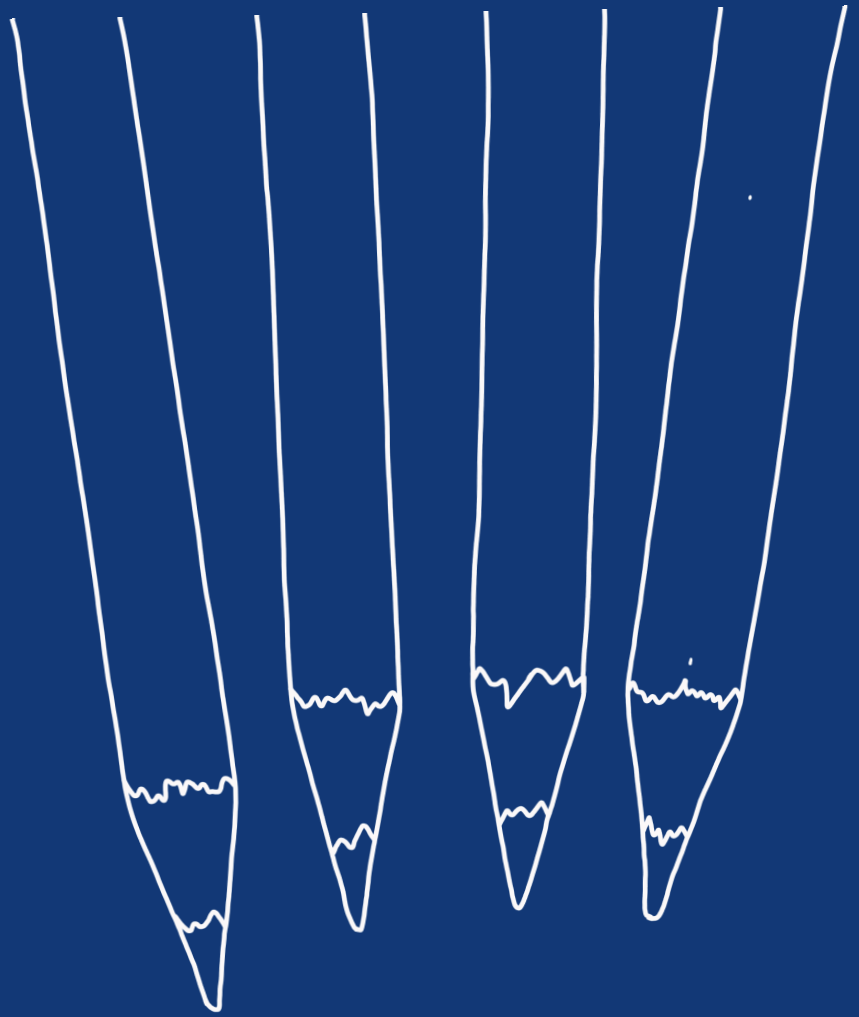


Our Support Unit

At Five Dock Public School we have a support unit that contains three classes for children with autism, a moderate intellectual disability and autism or multi-categorical disabilities. The support unit is an integral part of our school and our aim is to provide as much integration as possible. Some of these children are transported to the school each day through assisted transport by taxi, whilst others are dropped off and collected by their families. In order to be enrolled in the support unit, a meeting takes place with the principal of the child's local school and an access request form is developed with necessary reports attached. This is then sent to one of the Department's network offices. A panel then makes decisions regarding where the most appropriate setting is to meet the child's needs. Living in the local area does not necessarily lead to a position being offered in one of the Five Dock Public School support classes.



RESPECT, PARTICIPATE, BELONG, ACHIEVE



Curriculum

All schools in New South Wales are mandated to deliver NSW Syllabuses for the Australian Curriculum. The learning areas that are covered are:

- English
- Mathematics
- Science and Technology
- Human Society and Its Environment (HSIE) (incorporating history and geography)
- Creative Arts (music, visual arts, drama and dance)
- Personal Development, Health and Physical Education (PDHPE)

For more information follow the link to the NSW Educational Standards Authority (NESA):

<https://educationstandards.nsw.edu.au/wps/wcm/connect/25cb2fe5-c5f4-4ce8-920c-6b4b108bb30a/parents-guide-to-nsw-primary-syllabuses-2017.pdf?MOD=AJPERES&CVID=>

A. Library

The school has a well-equipped library, or information centre. All classes visit the library for a lesson each week. Students are all encouraged to borrow books to read for pleasure. In addition to this, students are able to visit the library at lunchtime, three days a week, for games, reading or to have some quiet time.

B. Information Technology

All students have access to computers. We have iPads and laptops to support learning across all the learning areas.

C. Italian

The school currently implements an Italian language program. This reflects the Italian heritage of Five Dock last century. In 2018, we began a modified program for our preschool children.

D. Primary Schools Sporting Association (PSSA)

Children from Stage 2/Year 3 to Stage 3/Year 6 are provided with an opportunity to represent the school in cricket or softball in summer, or touch football, soccer or netball in winter. Children who do not participate in PSSA sport are engaged in an alternative sports program at school. In addition to this, a creative arts program runs on Friday afternoons.

E. Sports Programs

The school engages outside providers to deliver gymnastics, athletics, body & mind wellbeing and dance programs. This enables us to have access to specialist teachers to ensure quality programs are delivered by suitably qualified staff. There is a cost of approximately \$50.00 per term.

All children aged 8 years and over are eligible to compete in our swimming (early term 1), cross country (late term 1 or early term 2) and our athletics (for K-6 late term 2 or early term 3) carnivals. It is compulsory for children to attend and all are encouraged to participate to the best of their ability. Those children who achieve certain times for their events are then eligible to represent the school at the Western Suburbs PSSA District carnivals, often referred to as “zone”. Those children who are successful at zone carnival level are then provided with the opportunity to compete at Regional level and beyond.

It is extremely important that all children are able to swim in Australia given our proximity to water and our lifestyle. Children from kindergarten to year 4 attend swimming lessons in term 4 every year. There is a cost associated with this.

F. Band

Directions in Music provide a band program for students from Stage 2/Year 3 to Stage 3/Year 6. Details are provided to students in Stage 1/Year 2 at the end of the year. The bands perform at assemblies and special events. Individual and small group tutoring takes place at school after 3.00pm.

G. Choir

All children have the opportunity to participate in the choir. They also have the opportunity to perform at major school events.

H. Other activities

The school has a musician who takes a ukulele group. We have debating teams who are made up of students from years 3-6. They compete in the Inner West debating competition during terms 2 and 3.

I. Special religious education and special education in ethics

When you enrol your child you will be asked to nominate if you want your child to attend special religious education or special education in ethics. The special religious education classes are aligned with the Catholic and Anglican faiths. As an alternative, there is special education in ethics. Parents/carers who do not have a preference for a special religious education will be provided with information regarding the ethics program. Parents may choose to opt out of these programs.

J. Out of School Hours Care (OOSHC)

The Parents and Citizens Association has a sub-committee who manage the administration and staffing for OOSHC. Like many schools in the Inner West, places are limited for some mornings and afternoons. For further information contact OOSHC directly on: 9712 3260 or email fdpsoosh@tpg.com.au



Useful Things to Know

The school day.

The playground is open from 8:30 am each morning. Parents/carers are responsible for supervision prior to 8:30 am. Students are expected to stay in the lower part of the playground under and around the COLA (Covered Outdoor Learning Area) before school.

- 8:55am** First bell rings. Students are expected to line up under the COLA.
- 9:00am** Second bell rings. On Monday an assembly is held. The purpose of this is to come together to commence the week. Parents/carers are always welcome to stay for these assemblies. We ask that you listen to the announcements as this is a time for the children to learn about listening and receiving information in a formalised setting. Tuesday, Wednesday, Thursday and Friday the classes are met by their teachers and taken to class. Children who arrive after the second bell must be signed in by their parent/carer at the office.
- 11:00am** Morning tea commences. Please pack your child/ren a healthy morning tea. It is expected that they eat their morning tea, use the bathroom, wash their hands, have a drink and then play.
- 11:23am** First end of morning tea bell rings. Students are expected to sit down where they are. This enables them to stop and settle before moving to lines.
- 11:25am** The bell rings for students to go to lines where they are met by their teacher.
- 12:55pm** Lunch bell rings. The children are supervised for ten minutes whilst they eat their lunch. This ensures that teachers can check they are eating all of their lunch.
- 1:05pm** First half play commences.
- 1:20pm** Second half play commences.
- 1:43pm** First end of lunch bell rings. Students are expected to sit down where they are. As for morning tea this enables them to stop and settle before moving to lines.
- 1:45pm** The bell rings for students to go to lines where, just as for morning tea, they are met by their teacher.
- 3:00pm** Final bell for the day rings. Children who attend OOSHC are expected to make their way to OOSHC. The exception during first term is for our Early Stage 1/Kindergarten students who line up under the supervision of a teacher until one of the OOSHC carers comes to walk them to OOSHC.



Our School Uniforms

When students wear their school uniform each day, it supports them to feel a sense of belonging to their school and also prepares them for the day of learning ahead. Uniforms are sold through a uniform shop that is run by the P and C. Our school colours are navy and pale blue.

Summer

- Short sleeve polo shirt (pale blue with crest)
- Navy shorts (for boys or girls)
- Navy skorts (a combination of a skirt and shorts for girls)
- Summer dress

Winter

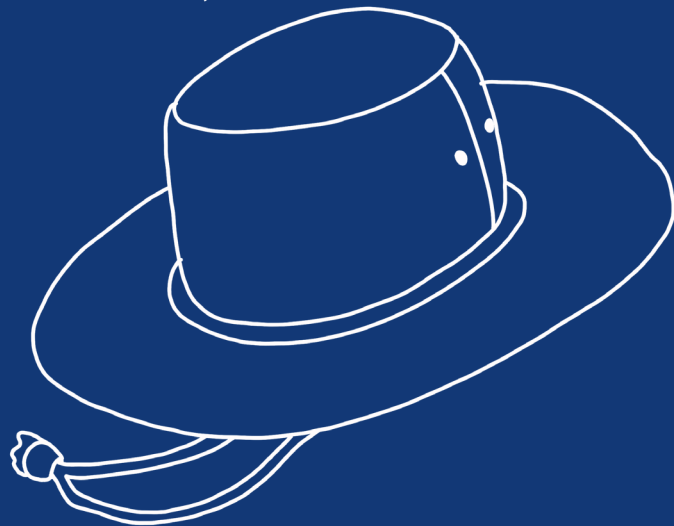
- Long sleeve polo t-shirt (pale blue with crest)
- Long navy pants (for boys)
- Bootleg navy pants (for girls)
- Girls' tunic
- Jumpers, jackets (navy with crest)
- Baseball style jacket (navy and pale blue with crest)

Sports Uniforms

- Sports polo shirt
- Sports shorts
- Tracksuit pants
- Tracksuit jacket
- PSSA shirt

Accessories

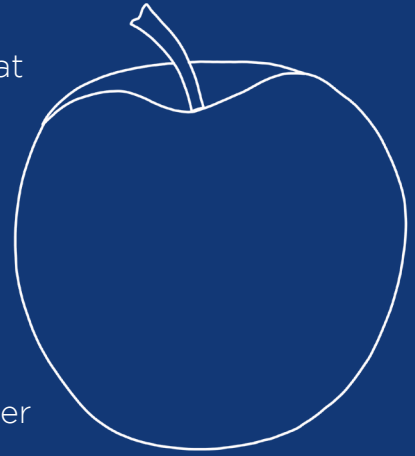
- Hats – sun safe bucket style hats
- Sunglasses
- School bag (back pack)
- Library bag
- Navy socks
- Navy tights
- Swimming cap (Students wear these when representing the school at Zone Swimming carnivals)



All of these items are available from the uniform shop. Details regarding opening hours will be provided at the beginning of each year.

Crunch and Sip

Five Dock Public School is a Crunch and Sip school. This means that all children may bring a healthy snack (carrot sticks, apple quarter, celery sticks) and a bottle of water.



Communication

Schools are extremely busy places and this generates a lot of information. We do try to keep you as informed as possible. In order to stay attuned to what is happening, download the eNews app at the App Store, Play Store or Windows Store (see the back of this guide for more information).

A. The school newsletter

Every two weeks during term, you'll receive an eNewsletter with important information about all the latest school events, activities and announcements. This is sent through the School eNews app and eNews alerts are sent home to remind parents/carers of upcoming events and other notices throughout the year.

B. P and C class representatives

Early in term 1, you'll get to meet other parents/carers in your child's class as well as the class teacher, through attending an information session. During these sessions, the P and C asks for one or two parents/carers to volunteer as class representatives. They support communication between the P and C and the parents/carers of the students in the class.

C. Teacher contact

If you would like to arrange a meeting with your child's teacher, please email the school (fivedock-p.school@det.nsw.edu.au), write a note or phone. Meetings can be organised for the next day if this is convenient for everyone.

Formalised parent/teacher/student meetings take place at the end of term 1 and written reports are sent home at the end of term 2 and 4. Of course circumstances arise when a meeting is required at other times. Home/school communication is important and we encourage positive and respectful relationships between all members of our community.

In addition to this there are times when there needs to be a meeting held with one of the Assistant Principals or the Principal. Please either ring the school, write a note or email requesting an appointment. It is important to remember that your child's classroom teacher is your first point of contact. They know your son or daughter better than anyone else in the school and are usually able to provide all the information you require.

D. Absences and holidays

It is legislated that all children from the age of 6 attend school every day. It is however appropriate and indeed necessary, to keep children home when they are unwell. Please ensure that if your child is going to be absent for two or more days, you notify the school and provide a doctor's certificate upon their return to school. If your child is away for one day, you only need to explain the absence in the form of a note.

Rolls are checked regularly and a Home School Liaison Officer visits the school every term to also check absences. If absences fall below 85% (approximately 8 days over a term), parents/carers will be contacted. It is important to understand that every day of learning is important and high absences can have a very negative impact on learning.

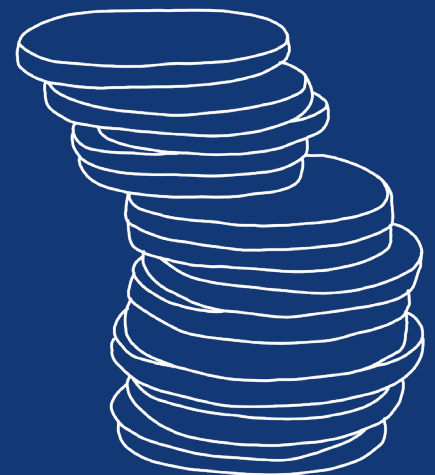
If you intend to take your child away from school during term time for any reason other than illness, you are required to complete a Certificate of Leave or a Certificate of Exemption which is signed off by the Principal. This certificate is available through the office. We do not encourage family holidays being taken during term time.

E. Fees and contributions

Public schools do not charge fees for general tuition. We are entitled however to request a voluntary contribution each year. This contribution is \$100.00 per year and has been decided upon by the school community through the P and C. This enables us to purchase additional resources that our overall resource allocation does not enable us to provide.

NSW Public Schools are funded through a resource allocation model that is needs based. This enables us to provide additional teaching and learning support for our students. Excursions, some sports activities and other events are charged directly to parents/carers. For families who find it difficult to make payments, there are some funds for student assistance set aside. At no time should a child miss out on any activity due to a family's financial circumstances.

Finally, this is a broad overview of the school's operational management procedures. Please make sure you check for notes, e-alerts and attend as many information sessions as possible to learn about the school.



Thank you